

DEPARTMENT OF LAND RESOURCE MANAGEMENT

Mapping land resources over huge areas of the Northern Territory

Dr Mandy Trueman
Land Resource Assessment Unit
May 2015

Land Resources

- Landform
- Soil
- Vegetation

Drawing: M. Michie
http://www.frogwatch.org.au/admin/custom/content/userContent/profdev/wet_diag.jpg

Land Resources

- Landform
- Soil
- Vegetation

Drawing: M. Michie
http://www.frogwatch.org.au/admin/custom/content/userContent/profdev/wet_diag.jpg

Land Resources

- Landform
- Soil
- Vegetation

Drawing: M. Michie
<http://www.frogwatch.org.au/admin/cus>

Huge areas

Mapping project

- 870,000 km² study area
- Scale 1 : 250,000
- To match North

Previously

- Scale 1 : 1,000,000
- Land Systems Map
- Old & has issues

Linework issues

50 km

Land System:

An area with a recurring pattern of component parts that have a particular combination of **landform, soil and vegetation**.

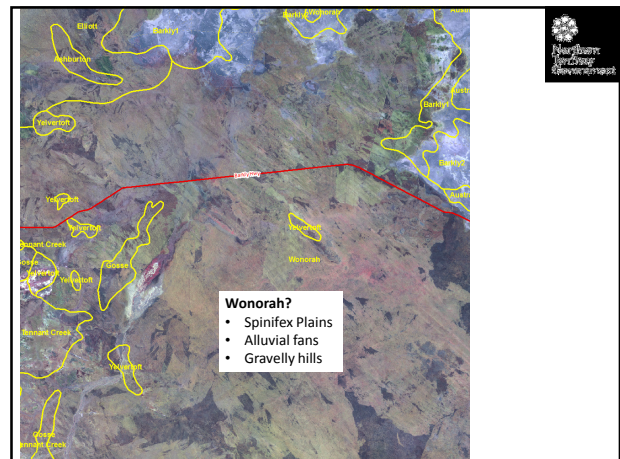
Wonorah:
Spinifex-covered plains

Components are not mapped

Unit	Area	Land Form	Soil*	Plant Community
1	Large	Higher parts of plain. Heavily-vegetated, steeply sloping with maximum of weathered rock and surface drainage, well-organized surface drainage.	No records for this region but probably red clayey sands (L4).	Spinifex shrubs and low trees, <i>S. baryfolia</i> (various forms) over <i>Trifolium junceum</i> (various forms).
2	Large	Lower parts of plain. Flat plains with no surface drainage.	At least one variety of (L1) for the dominant soils of this land system in the nearby region; and presumably some shallow brown soils.	
3	Small	Spoke: runs up to 30 ft high and 1 mile wide, levelled slope, vertical slopes, up to 400 yd long and attracting 25% up to short, dense, <i>Banksia</i> channels.	Presumably outcrop and shallow steep soils.	
4	Very small	Spoke: or various forms, up to 100 ft high.		
5	Very small	Alluvial fans: up to 1 mile long.	Presumably red clayey sands (L4).	Spinifex shrubs and low trees of <i>S. baryfolia</i> (various forms) over <i>Trifolium junceum</i> (various forms) or <i>S. baryfolia</i> (various forms).

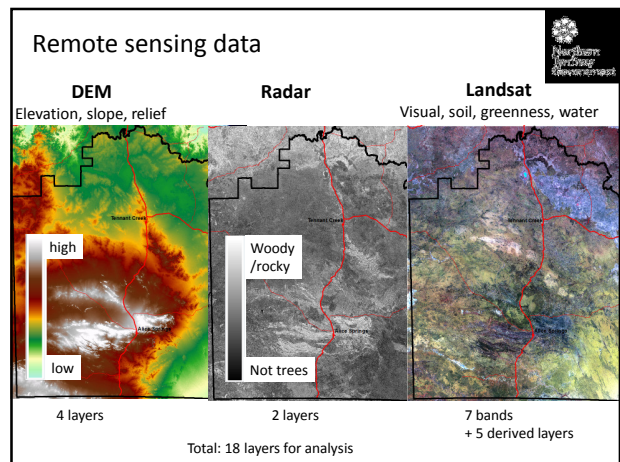
*The numbers in parentheses in this column refer to soil groupings in Part VIII.

Good descriptions



Methods

- Limited field data collection
- Existing data
 - Land Systems
 - Ground Data
 - Land Units
- Remote sensing data



Analysis: eCognition

