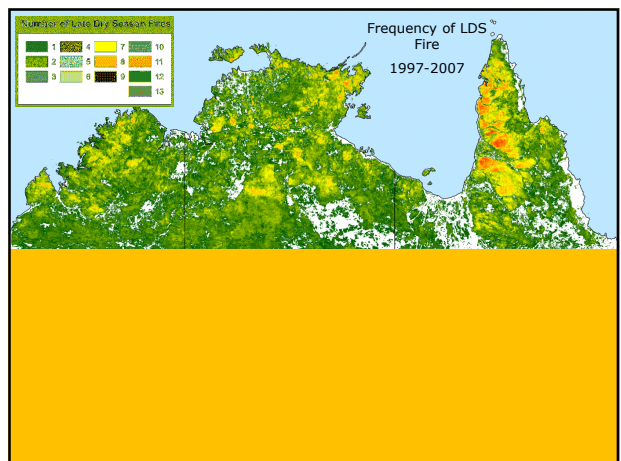
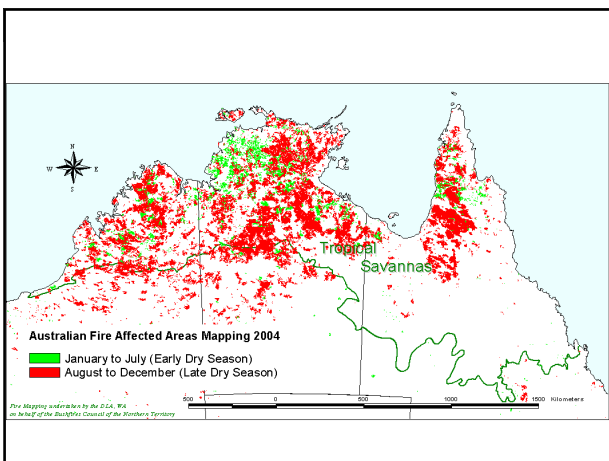
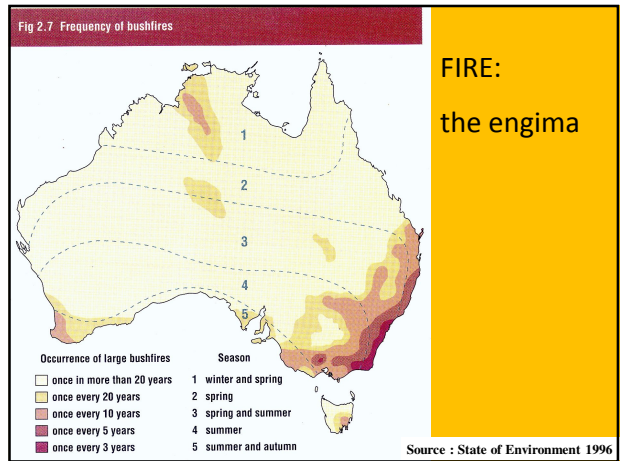


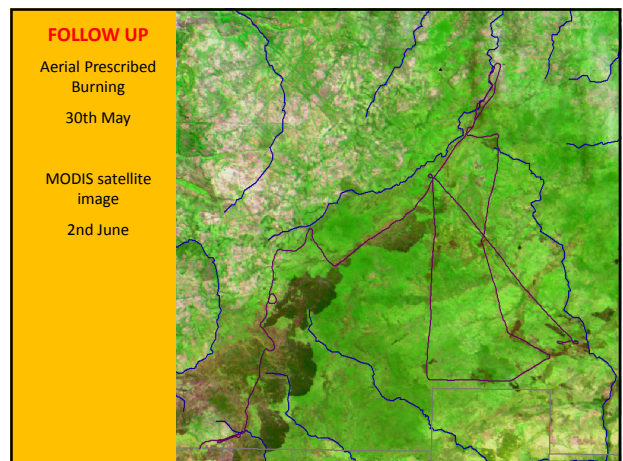
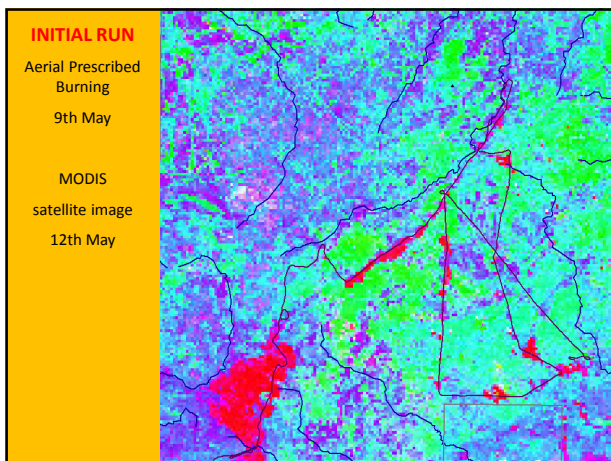
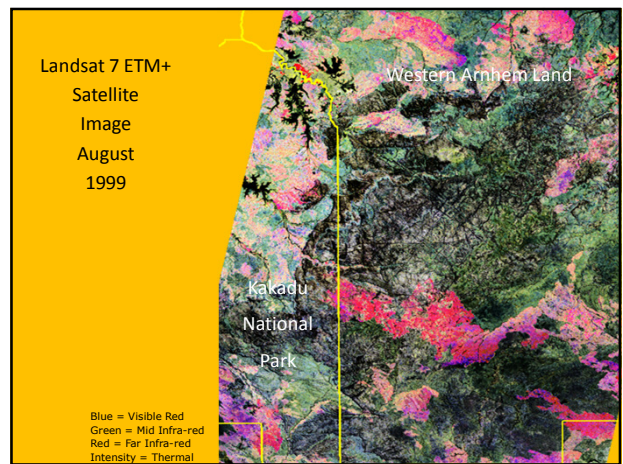
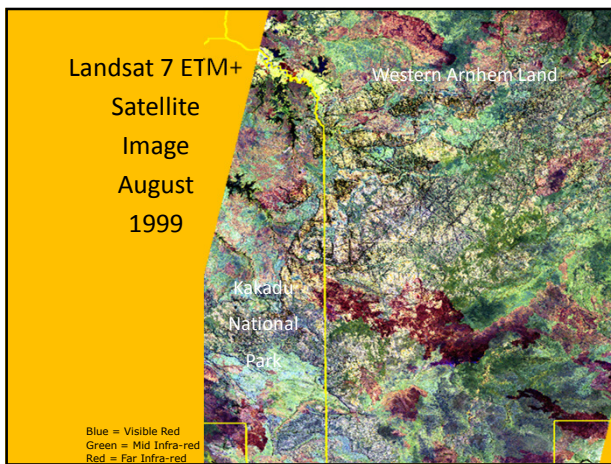
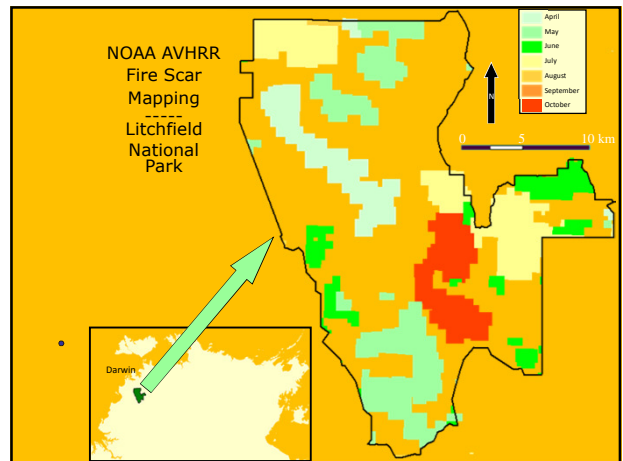
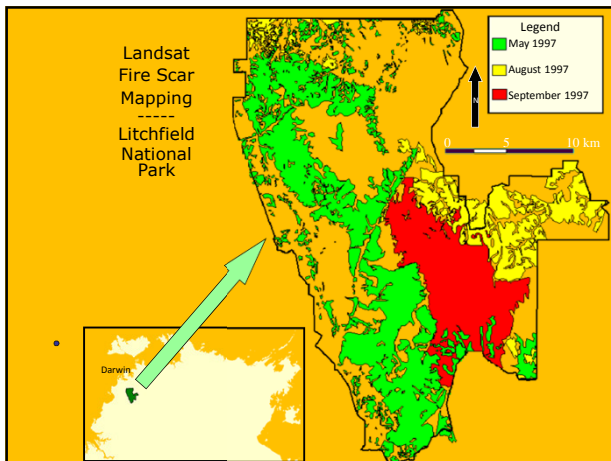
Fire Monitoring in northern Australia

Dr Andrew Edwards
Research Fellow (Bushfires)



DCBR
Darwin Centre for Bushfire Research
Research Institute for Environment and Livelihoods
Charles Darwin University





**North Australia Fire Information
NAFI**

www.firenorth.org.au

TOP END FIRE MAPPING

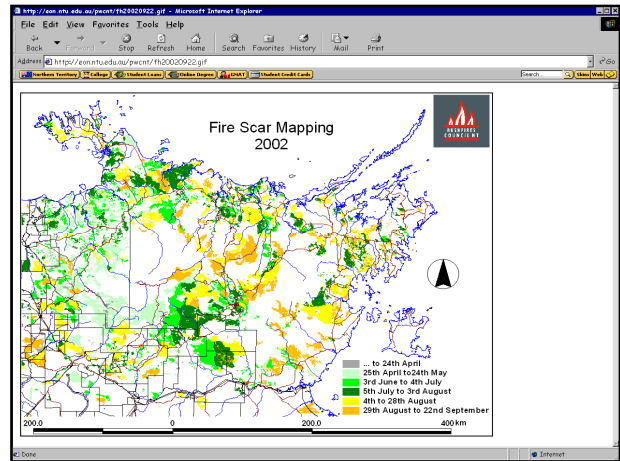
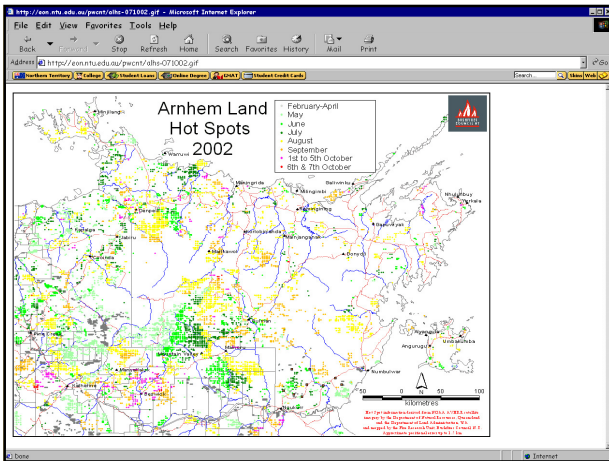
We've also created a set of interesting [Links](#) where you can go and find more information for detecting fires in the Top End

Hot Spot maps
(click [here](#) for information on the mapping)

Top End Region	Kakadu, Nitmiluk, Mary River & Djakdjing National Parks	Arnhem Land Region	Gulf Region	VRD Region
Cumulative hot spots to:	Cumulative hot spots to:	Cumulative hot spots to:	Cumulative hot spots to:	Cumulative hot spots to:
29 October 2002	29 October 2002	2 October 2002	29 October 2002	29 October 2002

Fire Scar maps
(these maps are derived from [MODIS](#) satellite imagery)
[Arnhem Land / Kakadu Region - 22nd September 2002](#)

Satellite Image maps
(this image was taken by the [MODIS](#) sensor)
[Satellite Image of the "Top End" - 22nd September 2002](#)



Other fire datasets....

